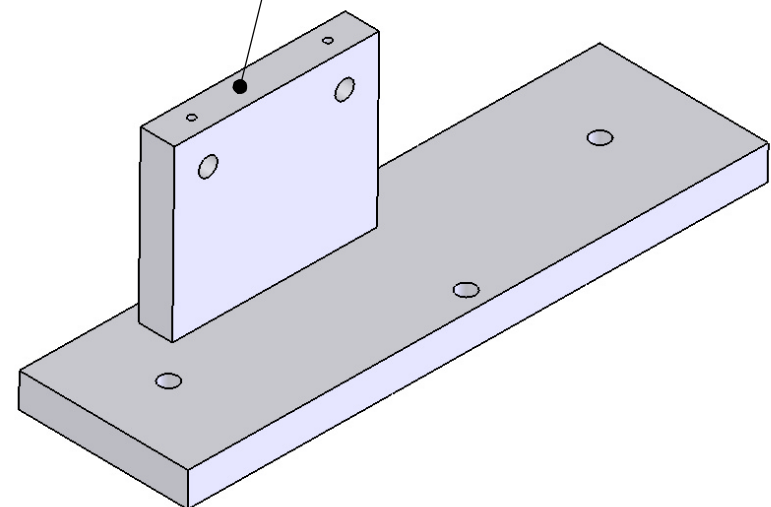


Bulkhead attaches to base by 2 McMaster 93615A217 low head c-sunk cap screws. 3x 1/4-20 large-head cap screws attach assembly to stage



**PROPRIETARY AND CONFIDENTIAL**  
 THE INFORMATION CONTAINED IN THIS DRAWING IS THE SOLE PROPERTY OF <INSERT COMPANY NAME HERE>. ANY REPRODUCTION IN PART OR AS A WHOLE WITHOUT THE WRITTEN PERMISSION OF <INSERT COMPANY NAME HERE> IS PROHIBITED.

		UNLESS OTHERWISE SPECIFIED:		NAME	DATE	
		DIMENSIONS ARE IN INCHES TOLERANCES: FRACTIONAL ± ANGULAR: MACH ± BEND ± TWO PLACE DECIMAL ± THREE PLACE DECIMAL ±	DRAWN	GJP		TITLE:
		INTERPRET GEOMETRIC TOLERANCING PER:	CHECKED			
		MATERIAL <b>UHMW PE</b>	ENG APPR.			
		FINISH	MFG APPR.			
NEXT ASSY	USED ON		Q.A.			
			COMMENTS:			
APPLICATION		DO NOT SCALE DRAWING				SIZE DWG. NO. REV
						<b>A</b> bulkhead
						SCALE: 1:5 WEIGHT: SHEET 1 OF 1